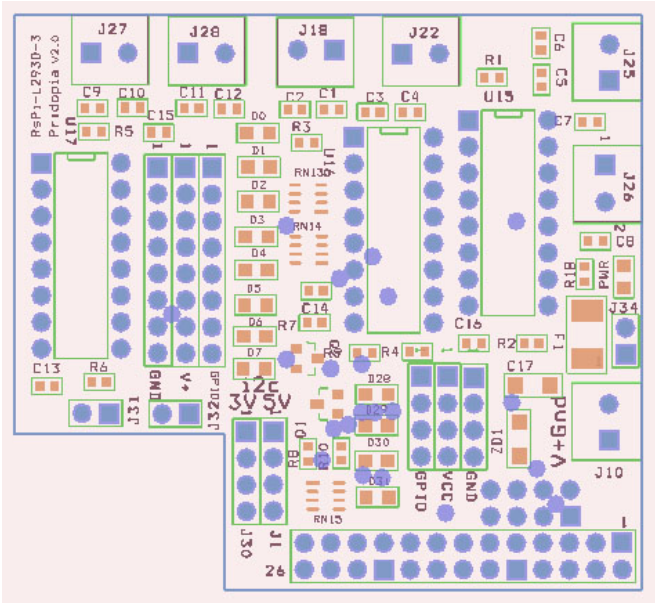
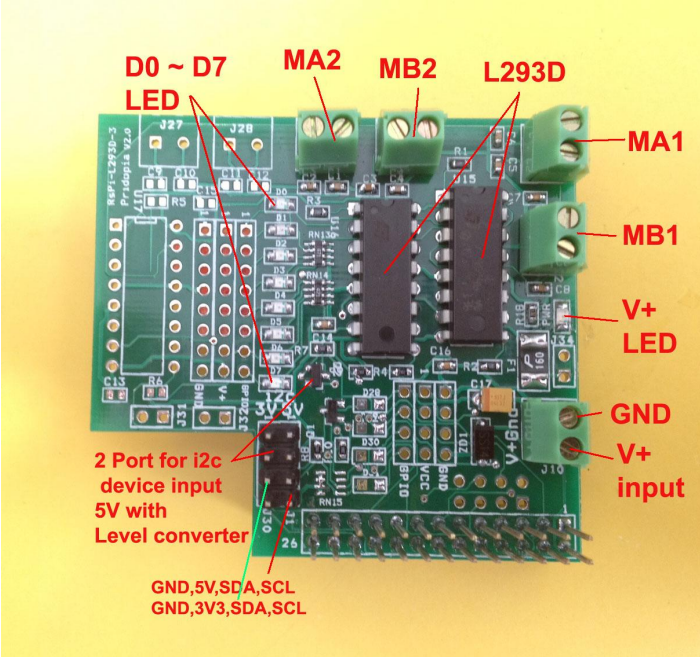
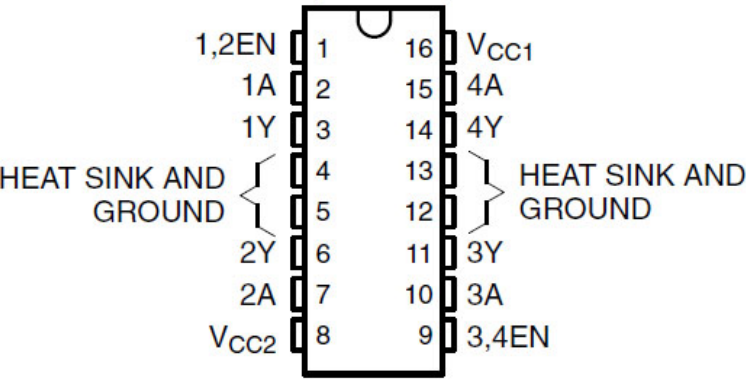
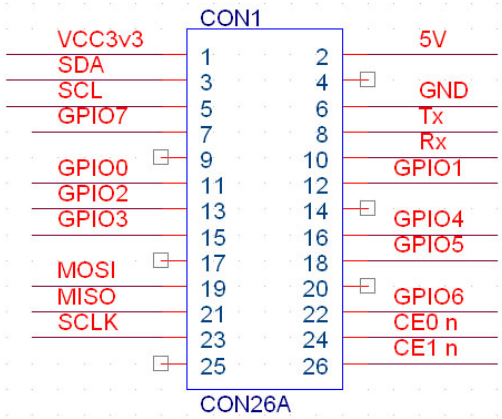


RsPi-L293D-2-v2.0 4 Motor Board User Manual



Rs-Pi P1Connector



Pin 1	Pin 2	Pin 7	Function
High	Low	High	Turn clockwise
High	High	Low	Turn anti-clockwise
High	Low	Low	Stop
High	High	High	Stop
Low	Not applicable	Not applicable	Stop

**L293D** use RS-Pi pin 11,12,13,15,16,18,22,7 as  
 GPIO 0 to GPIO 7 input  
 GPIO 0 ~ 3 for MA1, MB1  
 GPIO 4 ~ 7 for MA2, MB2

2 extra 12c input for sensors (5V or 3v3) (5V port with Level converter)

1. J29 pin1 – pin5 GPIO28,GPIO29,GPIO30,GPIO31,GND  
 J30 pin1 – pin4 GND,3V3,SDA,SCL  
 J1 pin1 – pin4 GND,5V,SDA,SCL
2. U15,U16, U17 L293D
3. 5 . J24 Mini USB 5V input

**L293D** use RS-Pi pin 11,12,13,15,16,18,22,7 as  
 GPIO 0 to GPIO 7 input

\* Motor use 5V DC Motor

## Test Program

Download test program on our web site

<http://www.pridopia.co.uk/pi-L293d-3.html>

2motor.py 4motor.py

New Pridopia scratch interface software you can download from our web site

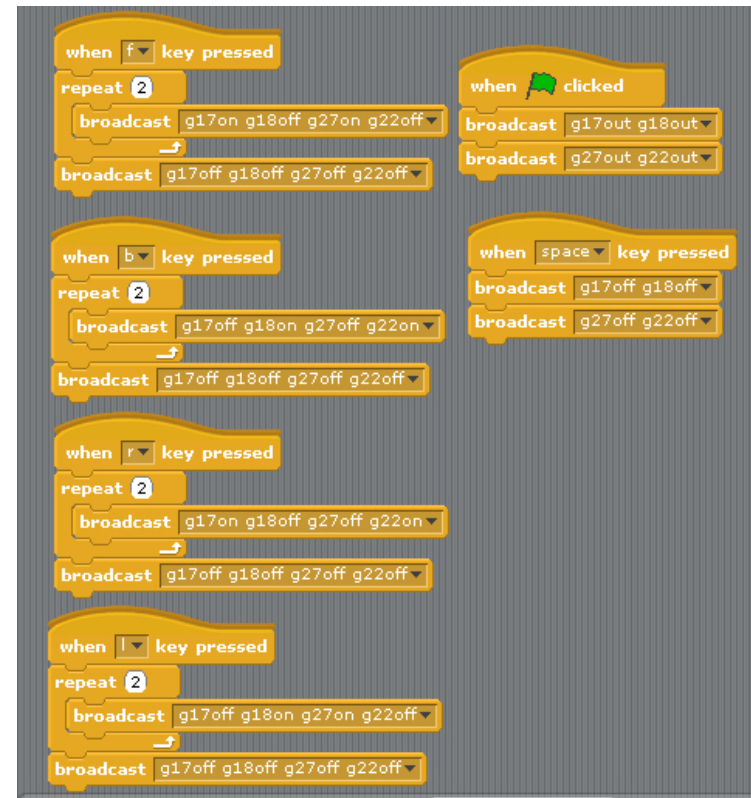
<http://www.pridopia.co.uk/rs-pi-set-scratch.html>

## Package Content

- 1x Rs-Pi L293D-2 4 Motor board
- 1x Manual

define GPIO 17,18,27,22, as output

- 1.press keyboard " f " GPIO 17,27 LED "ON" & 18,22 LED "OFF" car move forward
- 2.press keyboard " b " GPIO 18,22 LED "ON" & 17,27 LED "OFF" car move backward
- 3.press keyboard " l " GPIO 18,27 LED "ON" & 17,22 LED "OFF" car turn right
- 4.press keyboard " r " GPIO 17,22 LED "ON" & 18,27 LED "OFF" car turn left
- 5.press keyboard " space " GPIO 17,27 LED "OFF" & 18,22 LED "OFF" car STOP



2 Motor control demo code forward, backward, turn right, turn left.  
 stop