

Raspberry Pi - P-HAB (High-Altitude Balloon)

1. 04 Jun 2014 Balloon Launch
2. 06 Jul 2014 Balloon launch [Detail](#) more photos from sky
3. 13 Jul 2014 Balloon launch [Detail](#) function test fly
4. 20 Jul 2014 Balloon launch [Detail](#) function test fly
5. 27 Jul 2014 Balloon launch [Detail](#) function test fly

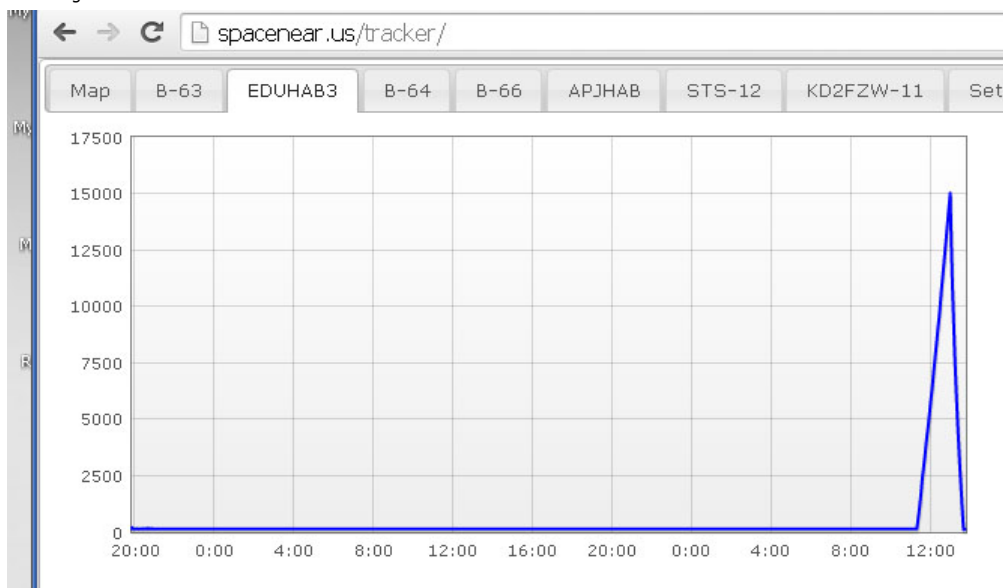
4. 20 Jul 2014 Balloon Launch

This is another function test fly, for test cut down function will work in 15000M?

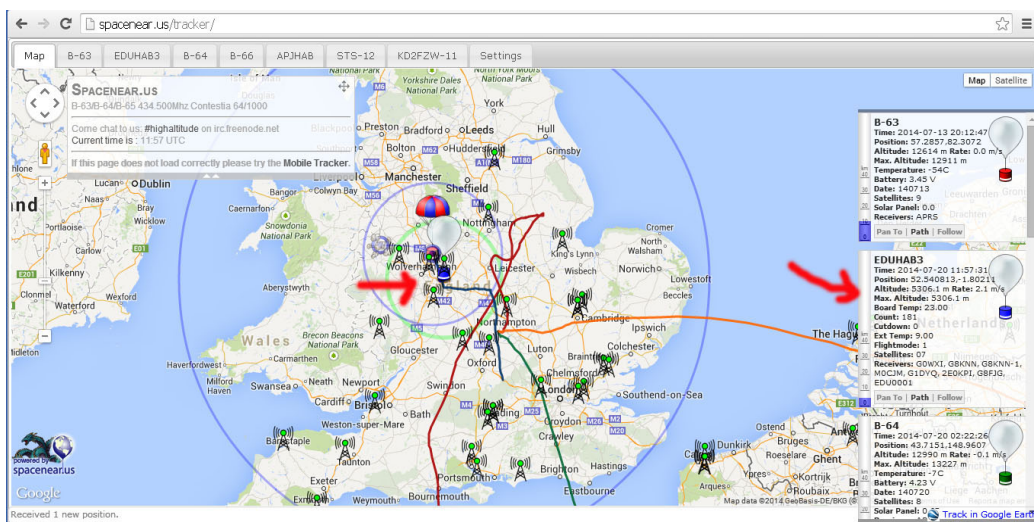
1. The cutdown work at 15000M (software setting, you can change)

Detail information will update soon.

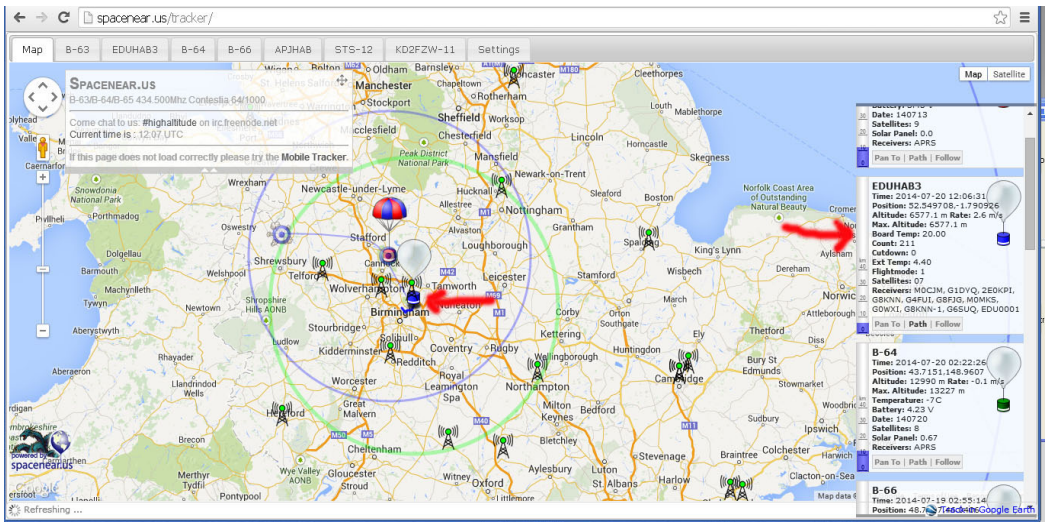
Pi-HAB signal



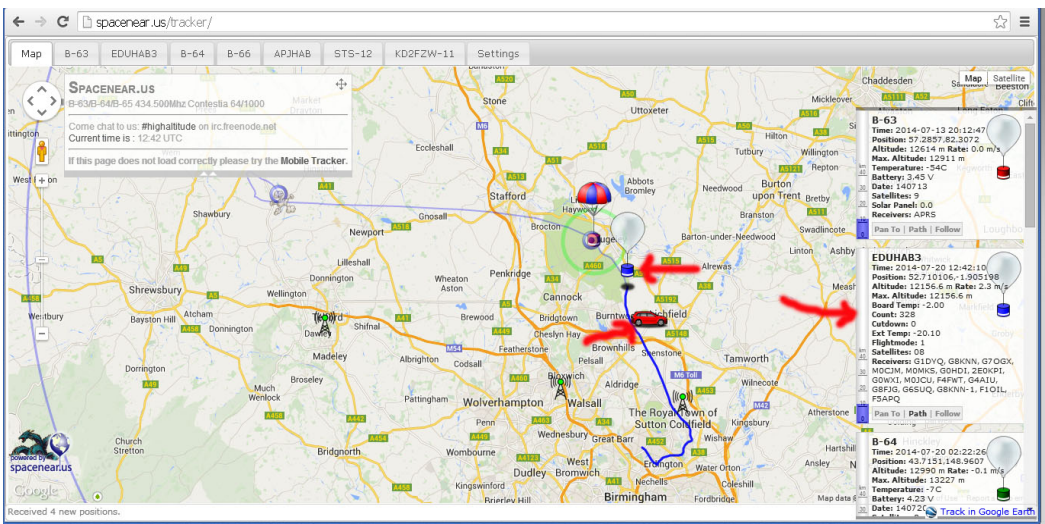
P-HAB signal reach at 15018.7M and drop and landed about 14:50



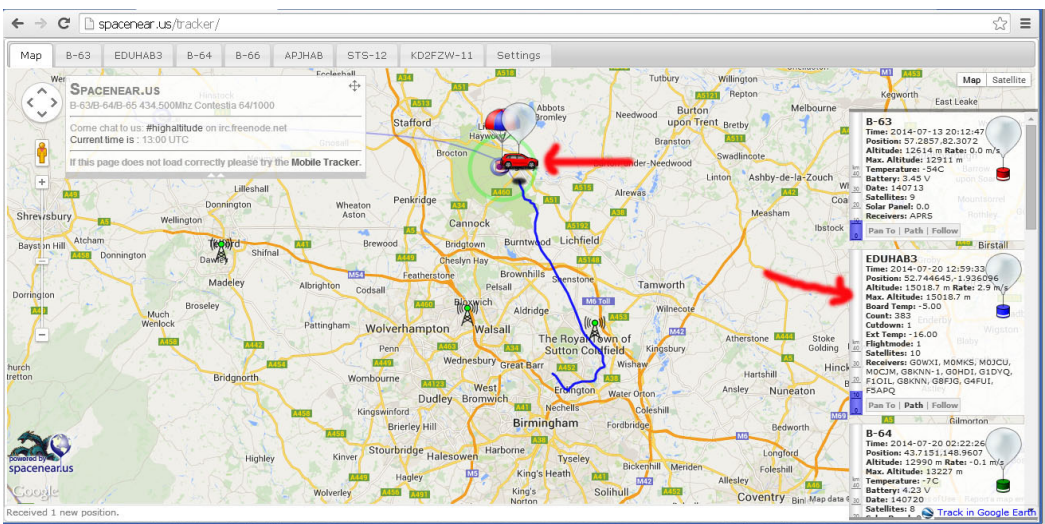
at 11:57:31 reach 5306.1M



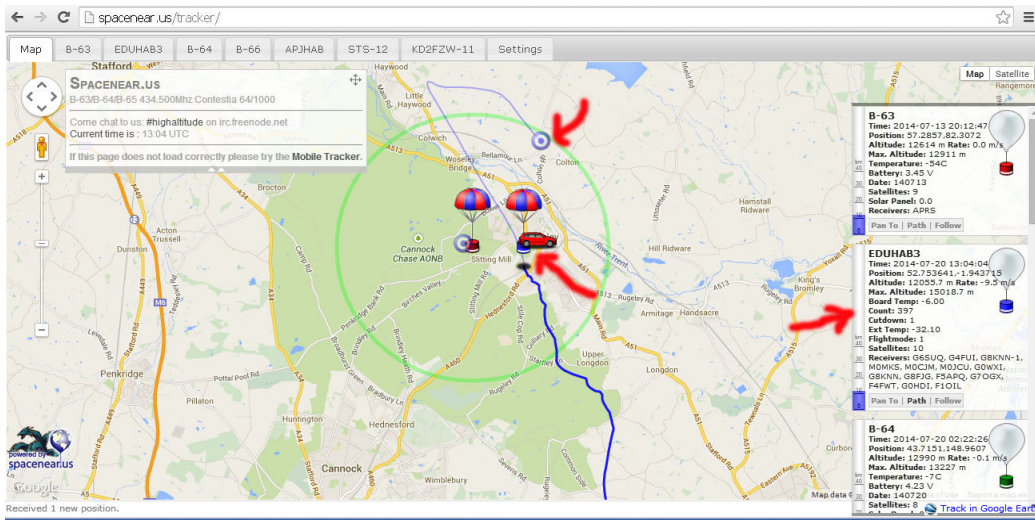
at 12:06:31 reach 6577.1M



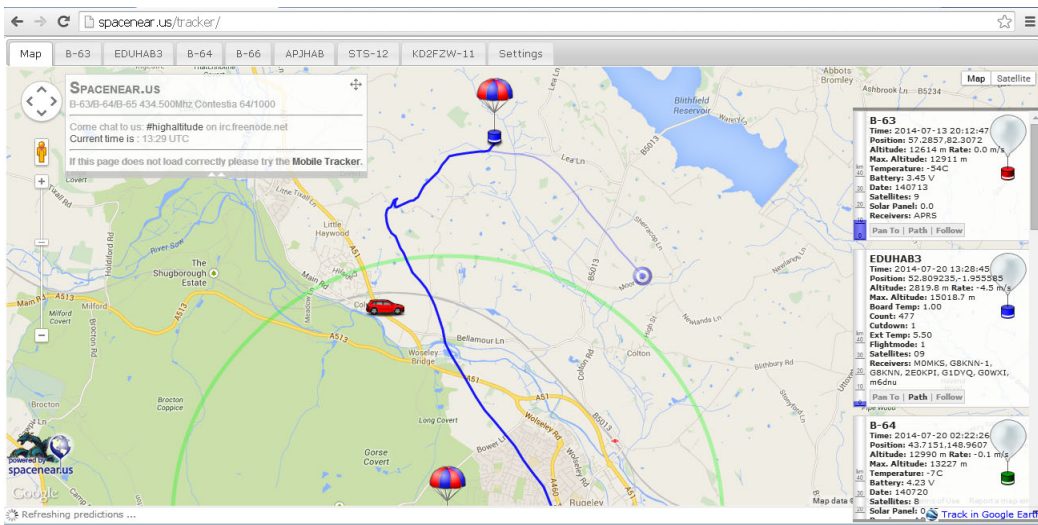
at 12:42:10 reach 12156.6M



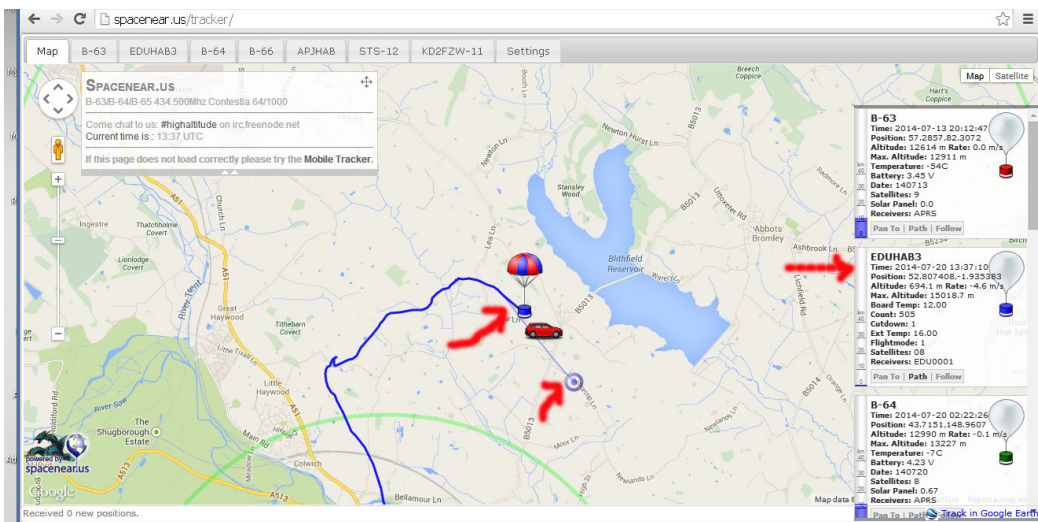
and at 12:59:33 reach 15018.7M cutdown = 1



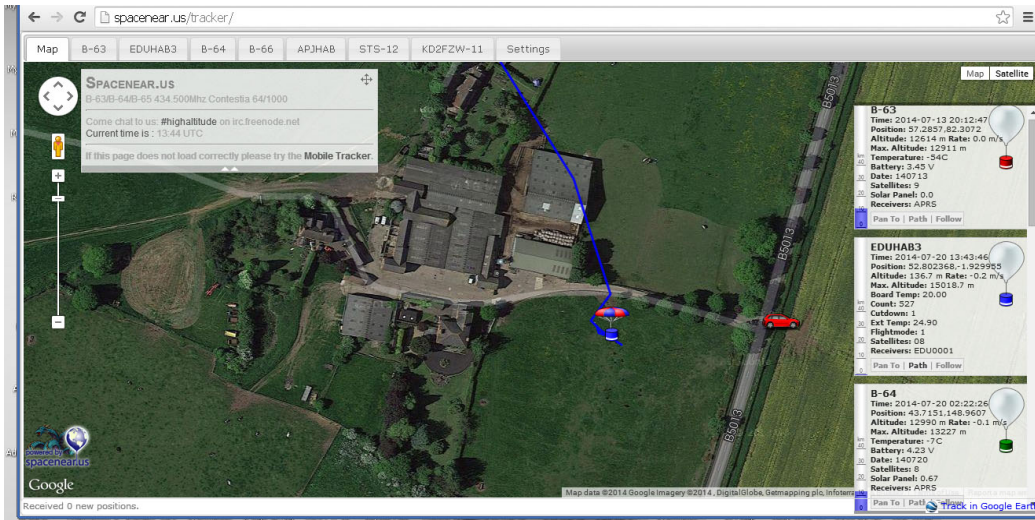
at 13:04:04 drop to 12055.7M



at 13:28:45 drop to 2819.8M



at 13:37:10 drop to 694M



at 13:43:46 landing ..

log file, short data mode send back

time, count, latitude, longitude, satellites, flightmode, board_temp, ext_temp, altitude, cutdown

12:22:43,265,52.592973,-1.832023,08,1,10.00,-8.50,9039.7,0
 12:59:33,383,52.744645,-1.936096,10,1,-5.00,-16.00,15018.7,1
 13:07:33,408,52.77384,-1.957776,09,1,-8.00,-35.30,10308.7,1
 13:50:22,549,52.802443,-1.929148,08,1,25.00,24.90,110.4,1

